



UNITED STATES DEPARTMENT OF AGRICULTURE
FOREST SERVICE
MT. BAKER-SNOQUALMIE NATIONAL FOREST
ORDER # 06-05-24-13

Miner's Creek Complex Fire Closure

Pursuant to 16 U.S.C. § 551 and 36 CFR § 261.50(a) and (b), to provide for public and employee safety, the following acts are prohibited within the Darrington Ranger District of the Mt. Baker-Snoqualmie National Forest as described below and shown in Exhibit A. This order will be effective from July 19, 2024, to December 31, 2024, unless rescinded sooner.

PROHIBITION:

- 1. Being on any National Forest System Trail.** [36 CFR § 261.55(a)]
- 2. Entering or using a developed recreation site or portion thereof.** [36 CFR § 261.58(b)]

CLOSURE AREA DESCRIPTION:

Suiattle River Trail #784 from its inception at the Suiattle Trailhead within T32N, R12E, S24, extending through T32N R13E, S24, 25, and 36; T32N, R14E, S31; T31N, R14E, S6, 5, and 4; to its terminus at the intersection with the Pacific Crest Trail #2000 in Section 3. (See Exhibit A)

Miner's Ridge Trail #785 from its inception at the intersection with the Pacific Crest Trail #2000 within T31N, R14E, S12, extending through T31N, R15E, S7, 8, 5, and 9 to its terminus at the intersection with the Pacific Crest Trail #2000 in T31N, R15E, S10. (See Exhibit A)

Image Lake Trail #785.1, in T31N, R15E, S5 and S8. (See Exhibit A)

Miner's Ridge Lookout Trail #785.3, in T31N, R15E, S7. (See Exhibit A)

Grassy Point Trail #788 from its inception at the intersection with the Pacific Crest Trail #2000 within T31N, R14E, S28, extending through T31N R14E, S21 to its terminus in T31N, R14E, S26. (See Exhibit A)

Buck Creek Pass Trail #789 from its inception at the intersection with the Pacific Crest Trail #2000 within T31N, R15E, S15, extending through T31N R15E, S16, 21, 22, 28, and 27 to the boundary with the Okanagan-Wenatchee National Forest in T31N, R15E, S34. (See Exhibit A)

Milk Creek Trail #790 from its inception at the intersection with the Suiattle River Trail #784 within T32N, R13E, S25, extending through T32N, R13E, S36; T32N, R14E, S31; T31N, R14E, S6, 7, 18, and 19, to its terminus at the intersection with the Pacific Crest Trail #2000 in T31N, R14E, S20. (See Exhibit A)

Gamma Way Trail #791 from its inception at the intersection with the Upper Suiattle Trail #798 within T31N, R15E, S19, extending through T31N, R14E, S24 and 25 to its terminus in T31N, R14E, S36. (See Exhibit A)

Sulphur Mountain Trail #794 from its inception at the Suiattle Trailhead within T32N, R12E, S24, extending through T32N R13E, S24 and T32N, R14E, S30, to its terminus in T32N, R14E, S29. (See Exhibit A)

Miner's Cabin Trail #795 from its inception at the intersection with the Miner's Ridge Trail #785 within T31N, R15E, S7, extending through S8 to its terminus at the Miner's Ridge Trail #785 in T31N, R15E, S9. (See Exhibit A)

Canyon Lake Trail #797 from its inception at the intersection with the Miner's Ridge Trail #785 within T31N, R15E, S8, extending through T31N, R15E, S5 and 4; T32N, R15E, S33 and 28, to its terminus at Canyon Lake in T32N, R15E, S29. (See Exhibit A)

Upper Suiattle Trail #798 from its inception at the intersection with the Pacific Crest Trail #2000 within T31N, R14E, S13, extending through T31N R15E, S18, 19, 20, and 29 to its terminus in T31N, R15E, S32. (See Exhibit A)

Pacific Crest Trail #2000 from Mica Lake in T31N, R14E, S19, extending through T31N, R14E, S20, 21, 28, 27, 22, 23, 14, 13, 12, 11, 10, 3, and 2; T31N, R15E, S18, 17, 16, 15, and 10; to the boundary with the Okanagan-Wenatchee National Forest in T31N, R15E, S11. (See Exhibit A)

Miner's Ridge Lookout, located in T31N, R15E, S7. (See Exhibit A)

Sulphur Creek Campground and **Suiattle Trailhead**, located within T32N, R12E, S24 (See Exhibit A)

EXEMPTIONS:


Pursuant to 36 CFR § 261.50(e), the following persons are exempt from this Order:

1. Any Federal, State, or local officer, or member of an organized rescue or fire-fighting force in the performance of an official duty.
2. Persons with a Valid Forest Permit for Use of Roads, Trails, or Areas Restricted by Regulation or Order (Form FS-7700-48), specifically exempting them from this order.

These prohibitions are in addition to the general prohibitions in 36 CFR Part 261, Subpart A.

Violations of these prohibitions are punishable by a fine of not more than \$5,000 for an individual or \$10,000 for an organization, or imprisonment for not more than 6 months, or both (16 U.S.C. § 551; 18 U.S.C. §§ 3551, 3571, and 3581).

Executed in Everett, Washington, this 19th day of July 2024.



Jody L. Weil
Forest Supervisor
Mt. Baker-Snoqualmie National Forest



United States
Department of
Agriculture


Forest
Service

Mt. Baker-Snoqualmie
National Forest

1000 SE Everett Mall Way
Suite 410
Everett, WA 98208

July 19, 2024

MEMORANDUM

FROM: Forest Supervisor Jody L. Weil 

TO: FILE

SUBJECT: Miner's Creek Complex Fire Closure Order #06-05-24-13

FILE CODE: 1950

ISSUE:

The intent of this memorandum is to describe the need for public use restrictions, as outlined in Forest Order #06-05-24-13. This action is categorically excluded from further analysis and documentation in an EIS or EA and does not require a decision memo (36 CFR § 220.6(d)(1)) under the National Environmental Policy Act (NEPA). This memorandum also serves as the Civil Right Impact Analysis.

BACKGROUND AND NEED:

The justification for this temporary closure is for public and employee health and safety. The temporary order would be pursuant to 36 CFR § 261.50(a) and (b).

The justification for these use restrictions is to provide for protection of the public due to multiple recent wildfire ignitions in the area of the closed sites and trails. The closure will also allow fire personnel to conduct suppression efforts unimpeded.

Trails and Developed Recreation Sites will be closed to reduce public and employee safety concerns. To mitigate these risks, a temporary closure prohibiting use by any type of traffic or mode of transport will be established in the following areas located within Snohomish County, Washington:

Suiattle River Trail #784 from its inception at the Suiattle Trailhead within T32N, R12E, S24, extending through T32N R13E, S24, 25, and 36; T32N, R14E, S31; T31N, R14E, S6, 5, and 4; to its terminus at the intersection with the Pacific Crest Trail #2000 in Section 3. (See Exhibit A)

Miner's Ridge Trail #785 from its inception at the intersection with the Pacific Crest Trail #2000 within T31N, R14E, S12, extending through T31N, R15E, S7, 8, 5, and 9 to its terminus at the intersection with the Pacific Crest Trail #2000 in T31N, R15E, S10. (See Exhibit A)

Image Lake Trail #785.1, in T31N, R15E, S5 and S8. (See Exhibit A)

Miner's Ridge Lookout Trail #785.3, in T31N, R15E, S7. (See Exhibit A)

Grassy Point Trail #788 from its inception at the intersection with the Pacific Crest Trail #2000 within T31N, R14E, S28, extending through T31N R14E, S21 to its terminus in T31N, R14E, S26. (See Exhibit A)

Buck Creek Pass Trail #789 from its inception at the intersection with the Pacific Crest Trail #2000 within T31N, R15E, S15, extending through T31N R15E, S16, ,21, 22, 28, and 27 to the boundary with the Okanagan-Wenatchee National Forest in T31N, R15E, S34. (See Exhibit A)

Milk Creek Trail #790 from its inception at the intersection with the Suiattle River Trail #784 within T32N, R13E, S25, extending through T32N, R13E, S36; T32N, R14E, S31; T31N, R14E, S6, 7, 18, and 19, to its terminus at the intersection with the Pacific Crest Trail #2000 in T31N, R14E, S20. (See Exhibit A)

Gamma Way Trail #791 from its inception at the intersection with the Upper Suiattle Trail #798 within T31N, R15E, S19, extending through T31N, R14E, S24 and 25 to its terminus in T31N, R14E, S36. (See Exhibit A)

Sulphur Mountain Trail #794 from its inception at the Suiattle Trailhead within T32N, R12E, S24, extending through T32N R13E, S24 and T32N, R14E, S30, to its terminus in T32N, R14E, S29. (See Exhibit A)

Miner's Cabin Trail #795 from its inception at the intersection with the Miner's Ridge Trail #785 within T31N, R15E, S7, extending through S8 to its terminus at the Miner's Ridge Trail #785 in T31N, R15E, S9. (See Exhibit A)

Canyon Lake Trail #797 from its inception at the intersection with the Miner's Ridge Trail #785 within T31N, R15E, S8, extending through T31N, R15E, S5 and 4; T32N, R15E, S33 and 28, to its terminus at Canyon Lake in T32N, R15E, S29. (See Exhibit A)

Upper Suiattle Trail #798 from its inception at the intersection with the Pacific Crest Trail #2000 within T31N, R14E, S13, extending through T31N R15E, S18, 19, 20, and 29 to its terminus in T31N, R15E, S32. (See Exhibit A)

Pacific Crest Trail #2000 from Mica Lake in T31N, R14E, S19, extending through T31N, R14E, S20, 21, 28, 27, 22, 23, 14, 13, 12, 11, 10, 3, and 2; T31N, R15E, S18, 17, 16, 15, and 10; to the boundary with the Okanagan-Wenatchee National Forest in T31N, R15E, S11. (See Exhibit A)

Miner's Ridge Lookout, located in T31N, R15E, S7. (See Exhibit A)

Sulphur Creek Campground and **Suiattle Trailhead**, located within T32N, R12E, S24 (See Exhibit A)

AUTHORIZATIONS FOR FOREST PERMIT HOLDERS

This Forest Order includes an exemption for persons with a Forest Permit for Use of Roads, Trails, or Areas Restricted by Regulation or Order (Form FS-7700-48). Authorization under this exemption will be provided only if I or my delegate determine that the risk to personal health and safety is reasonable considering the appropriate personal protective equipment and other necessary safety measures. The District Ranger is delegated the authority to issue permits within the closure area.

SCOPING AND PUBLIC OUTREACH:

Notices and press releases articulating these prohibitions have been posted on the Mt. Baker-Snoqualmie National Forest website and provided to local media outlets for distribution. Closure signage has been posted on the ground and in proximity to the affected areas. Supervisory staff of the Mt. Baker-Snoqualmie National Forest have discussed the closure with potentially interested and invested cooperating parties.

REASONS FOR CATEGORICALLY EXCLUDING THE ACTION:

Based on a review of the proposed order and consultation with District and Forest resource specialists, I have concluded that this decision may be categorically excluded from documentation in an Environmental Impact Statement (EIS) or Environmental Assessment (EA) under the National Environmental Policy Act. This action falls

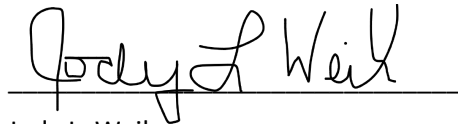
within the category identified in 36 C.F.R. § 220.6(d)(1) - prohibitions to provide short-term resource protection or to protect public health and safety - and does not require documentation in a decision memo, decision notice, or record of decision. I have determined that there are no extraordinary circumstances associated with this temporary closure. Implementation may begin immediately.

CIVIL RIGHTS IMPACT ANALYSIS:

I have determined that this closure will have no impacts on civil rights as it will apply to all individuals. No one group or person will be affected more than another group or person.

SUMMARY:

Based on my review, I have determined that this Forest Order is compliant with the Forest Order process and should be authorized.

A handwritten signature in black ink, reading "Jody L. Weil", is written over a horizontal line.

Jody L. Weil

Forest Supervisor

Mt. Baker-Snoqualmie National Forest

R. 12 E. | R. 14 E. | R. 15 E.

T. 32 N.
T. 31 N.
T. 30 N.

T. 32 N.
T. 31 N.
T. 30 N.

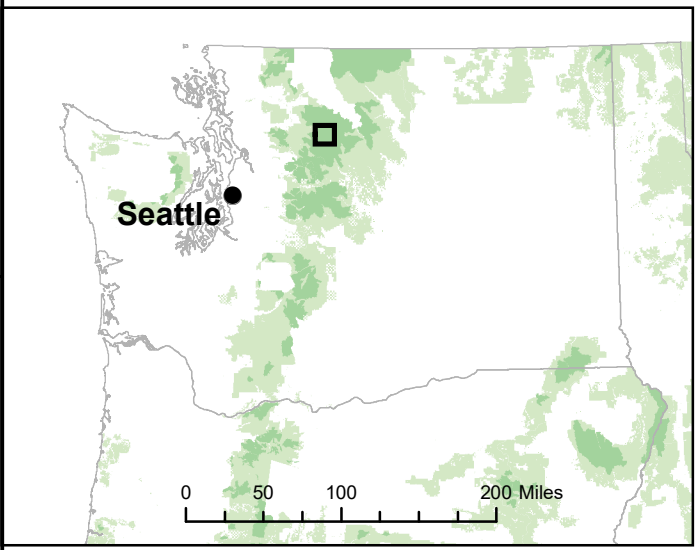
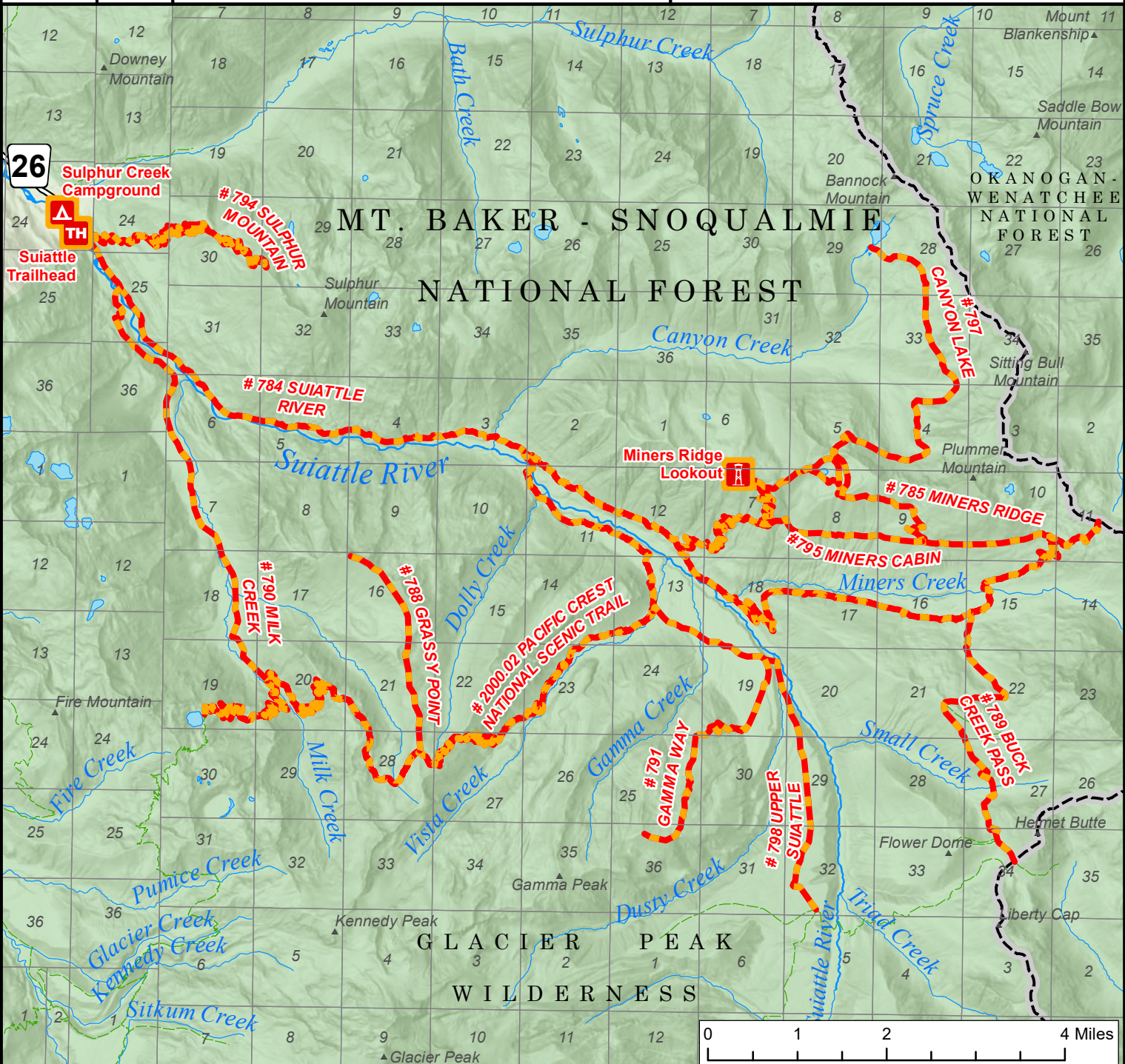


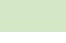



Exhibit A
Miners Complex Fire Closure
Closure Number 06-05-24-13
Mt. Baker-Snoqualmie National Forest
Darrington Ranger District

-  Site Closure
-  Trail Closure
-  National Forest
-  National Forest Wilderness

JW

